



MA Information Session Fall 2022



THE INFORMATION SCHOOL

iSchool @ UW-Madison

Housekeeping



PLEASE MUTE AUDIO
AND TURN OFF VIDEO
FOR QUALITY PURPOSES



SESSION IS BEING
RECORDED



POST QUESTIONS
IN THE CHAT BOX



QUESTIONS WILL BE
ADDRESSED AFTER THE
PRESENTATION

Our Team



Tanya Hendricks Cobb
Student & Alumni Services Coordinator
tcobb@wisc.edu



Alan Rubel
Professor and Director
arubel@wisc.edu



Debra Shapiro
Distinguished Faculty Associate & Coordinator of
Online MA Program
dsshapiro@wisc.edu



Nikki Wiessinger
Associate Director
nicole.wiessinger@wisc.edu



Agenda

- ❖ Information School
 - Why iSchool?
- ❖ MA Programs
 - Curriculum: Requirements
 - Degree completion
 - Concentration options
 - Career opportunities & services
 - Program comparison & funding
- ❖ Application Requirements
 - How to apply online session Decemb



Why the UW-Madison iSchool?



- **Program**

Nationally ranked & ALA accredited since 1922



- **Faculty and teaching**

20 permanent teaching faculty plus affiliated faculty, all experts across LIS

Responsive and supportive

Faculty advise and play an active role in student support

Emphasis in teaching quality, with all faculty teaching across programs

High student-faculty engagement

- **Curriculum**

Flexible, customizable, and responsive to changes in the field

Practical, professional, hands-on experience through a required practicum

- **Community**

Friendly, supportive, and collaborative community; Progress together through cohort model

- **Career Services**

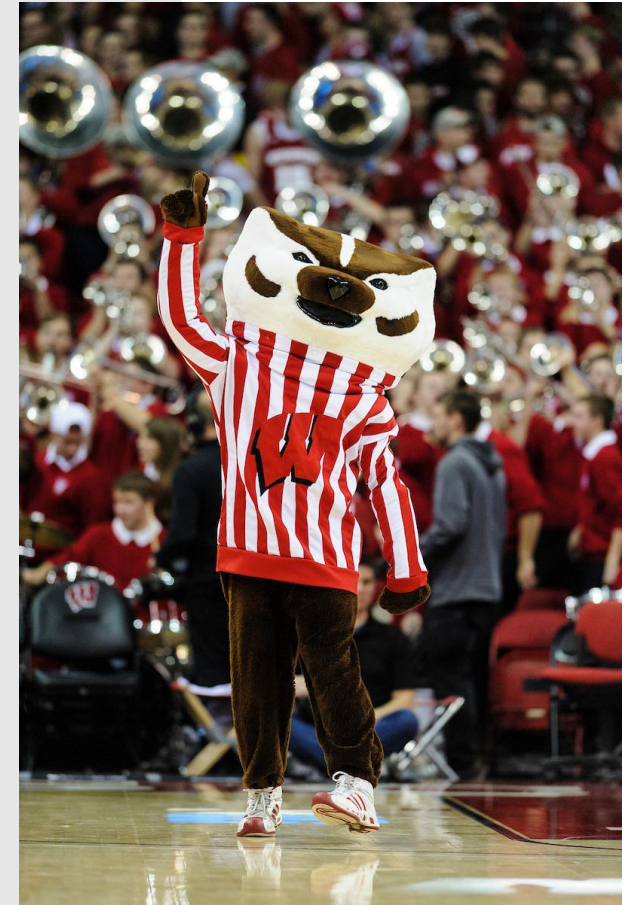
Strong career services and competitive placement rates

Degree Completion Timing & Length



- 36 credits to complete the MA degree
- Most courses are 3 credits for 15 weeks
- Short courses are 1 credit for 5 weeks
- Full-time = 9 credits per semester (typical load)
- Plan on each 3 credit course =
10-12 hours of work per week
- A one-credit class is the same workload per week, but with a shorter duration
- Part-time can be 1-2 classes per semester
(4 credits min. needed for financial aid)

[Graduate School Enrollment Requirements](#)



Degree Completion Timing & Length



- **36 credits**

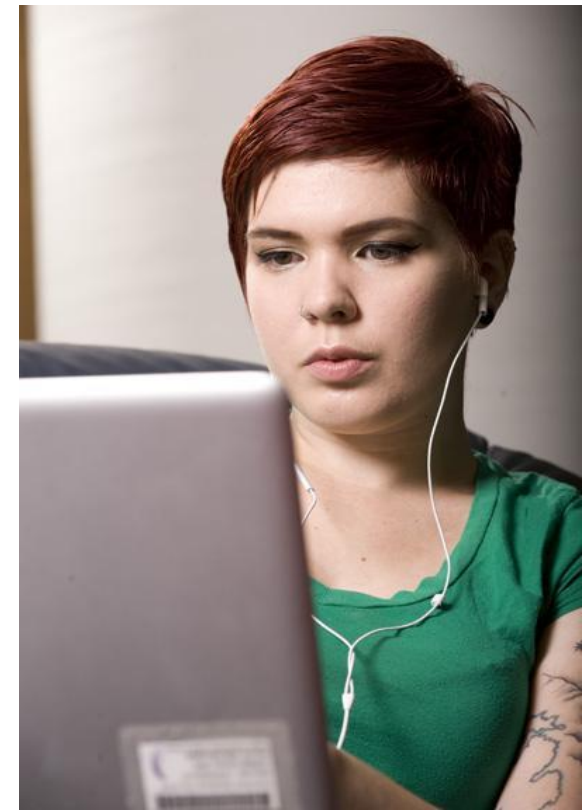
- Part-time: **Min. 2 credits** per semester (**Min. 4 credits** required for financial aid)
 - Go slow & self-fund
- Full-time: **9-10 credits** (three 3-credit courses, and possibly one 1-credit course)

- **Typical load:**

	On Campus	Online
Fall/Spring	9-10 credits	3-6 credits
Summer	1-4 credits	1-3 credits

- **Weekly time commitment**

Each 3-credit class requires about 10-12 hours of work per week



Curriculum at a glance: 36 credits total

Core: Take All Three [9 credits total]
LIS 601, LIS 602, LIS 603

Tier T: Technology
[3 credits]

Tier M: Management
[3 credits]

Tier DEI:
Diversity, Equity, Inclusion
[3 credits]

Fundamentals: Take two [6 credits total]

Practicum [3 credits, 120 site hours + online class], Portfolio, Electives
[varies]

Curriculum at a glance: 36 Credits



<u>MA Library and Information Studies Overview</u>	
Core courses (601, 602, 603)	9 credits
Tier DEI	3 credits
Tier M: Management	3 credits
Tier T: Technology	3 credits
LIS Fundamentals	6 credits
Capstone (Practicum)	3 credits
Electives	9 credits
e-portfolio	n/a
Total	36 credits

Curriculum at Glance: 36 Credits



<u>MA Library and Information Studies Overview</u>	
Core courses (601, 602, 603)	9 credits
Tier DEI	3 credits
Tier M: Management	3 credits
Tier T: Technology	3 credits
LIS Fundamentals	6 credits
Capstone (Practicum)	3 credits
Electives	9 credits
e-portfolio	n/a
Total	36 credits

MA Concentrations



Five *Concentration Areas* at the iSchool:

- Archives for a Digital Age*
- Data/Info Management & Analytics (DIA)
- Information Technology & User Experience (UX) / “Digital Librarianship”
- Librarianship
- Organization of Information

Concentrations are suggested pathways...

- To help tailor the degree to your interests
- Lots of students mix & match more than one concentration
 - Not required to choose a concentration

* Not all archives courses are available online.

Concentration Area: Archives in a Digital Age



Provide access to and promote preservation of born digital and historic archival materials and records.

Career areas:

- Digital asset management
- Digital preservation & curation
- Corporate archives
- Government archives
- Special collections
- Tribal libraries, archives & museums



- April Rodriguez ('15)
- Media Digitization Specialist
- Minnesota Historical Society

Concentration Area: **Data/Info Management & Analytics**



Work with data and information in educational, nonprofit, government, start up or business settings.

Analyze information and data to contribute to good decision making.

Take advantage of opportunities in the expanding fields of data analytics.

Career areas:

- Data manager
- Digital humanities
- Digital asset manager
- Research analyst/Data analyst
- Evaluation specialist
- Analytics specialist
- Research data librarian



- Katy Fox ('16)
- Research Analyst
- Colorado State Library Research Service

Concentration Area: Information Technology & UX Design



Design, develop and managing information technologies to solve problems in society.

Help people to use information technologies more effectively.

Career areas:

- User experience & usability
- Web design
- Digital asset management
- Digital curation
- Digital humanities developer
- Systems analyst
- IT training and instruction
- Academic technology support librarian



- Mary Kate Kwasnik ('15)
- Digital Humanities Producer/
Traveling Exhibitions Coordinator
- The Gilder Lehrman Institute of
American History

Concentration Area: **Librarianship**



Support communities and learning and promote access to information.

Career areas:

- College and universities
- Public libraries
- School libraries
- Law librarianship
- Science & health librarianship
- Youth librarianship
- Electronic collections management
- Research data management



- Courtney Becks ('17)
- Assistant Professor, African American Studies Librarian, and Jewish Studies Selector
- University of Illinois at Urbana-Champaign

Concentration Area: **Librarianship**



Support communities and learning and promote access to information.

Career areas:

- College and universities
- Public libraries
- School libraries
- Law librarianship
- Science & health librarianship
- Youth librarianship
- Electronic collections management
- Research data management



- Andrea Dictor ('14)
- Youth & Family Services Coordinator
- Sarasota County Libraries

Concentration Area: Organization of Information



Organize all the stuff!

Work with the latest information technologies and standards to help solve information overload, to increase access to materials.

Career areas:

- Metadata specialists
- Catalogers
- Taxonomy & ontology specialists
- Digital asset managers
- XML and linked data specialists
- Database and data managers



- Hannah Stitzlein ('15)
- Document Manager
World Trade Center Health Program
- NIOSH/Center for Disease Control

Additional Ways to Customize Your Degree



❖ Certificate Options

○ [Information Innovation and Organizational Change Certificate](#)

(School of Business)

-- Can complete concurrently with MA degree, On-campus MA program only

○ [Leadership Certificate](#)

(Center for Leadership and Involvement)

-- Can complete concurrently with MA degree, Online and On-campus MA Programs

❖ Courses from Other Departments

Count up to 9 credits of approved coursework from other top departments, including Computer Sciences, Statistics, Art History/Museum Studies

❖ Double Degrees

Must apply to both programs and fulfill requirements of both degrees.

Benefit from courses which count towards both degrees (Law, Music, Art History)

Double Degree Option: JD + MA



Be a lawyer, but not that kind of lawyer!

Help other lawyers conduct research and draft briefs.

Understand important legal databases and help practitioners and non-practitioners navigate legal issues.

- Law school libraries
- Law firm libraries
- State law libraries
- Westlaw, Lexis, and other legal database developers



- Andrew Lang (JD, MA 2015)
- Head of Reference
- Biddle Law Library, University of Pennsylvania



Career Outlook

Most respondents found jobs prior to graduation or within four months of graduating

- 87% reported full-time employment*
- 77% reported satisfaction with current position*

Types of Institutions:

Archives	Higher Education Institutions	Libraries (Academic, Government, Public)
Museums	Non-profit agencies	

Job Emphases:

Administration	Adult Services
Archiving	Assessment
Cataloging/Taxonomy	Collection Development
Data Analytics	Data Curation
Emerging Technologies	Government Information
Instruction	Knowledge Management
Market Intelligence	Metadata
Records Management	Reference Services
Special Collections	UX/Usability Analysis,
Website Design	Youth/Young Adult Services



(*Data from the iSchool Class of 2018 Employment Survey: 57% respondents)

Career Services



Strategic Career Planning starts when you start at the iSchool

One-on-One Services include:

- Cover letter and resume reviews
- Interviewing skills & strategies
- Offer negotiation consults



Career Prep Events and Resources Include:

- Current employer & alumni panels
- Samples of real-life successful alumni job applications
- Extensive Alumni network
- Integrated into coursework (*Intro Course 601, Field Placement 620*)
- 1 credit course on Preparing for the Job Search/ePortfolio
- Career Services Toolkit – 24/7 access: <https://ischool.wisc.edu/careertoolkitenter>

Cost Comparison: On-Campus vs. Online Program



Tuition	On Campus	Online
Rate	<p>Wisconsin Resident: \$6,087.24/semester</p> <p>Minnesota: \$9,645.48/semester</p> <p>Non-resident: \$12,750.68/semester</p> <p>tuition includes fees</p> <ul style="list-style-type: none"> ● For total estimated cost of attendance, see: https://financialaid.wisc.edu/cost-of-attendance/ 	<p>Same for All – not based on residency: \$850/Credit \$2,550/3-credit course</p> <p>Residency: Admission as student in the Online MA program <i>does not change your residency status</i>. If you are not from Wisconsin, you remain as a non-resident.</p>
TOTAL	<p>Program (typically 4 semesters plus 1 summer course):</p> <p>Wisconsin: \$26,653</p> <p>Minnesota: \$42,220</p> <p>Non-resident: \$55,805</p>	<p>Program (39crs): \$33,150/39crs.</p>

Funding



FAFSA

- Federal loans and grants
- 4 credits min./semester for financial aid

iSchool First Year Scholarships

- About 1/3 of all incoming students receive some funding from the iSchool for year 1

iSchool Continuing Student Awards

- Application opens each spring

iSchool *Professional Development Awards*

- Presenting at professional conferences

Jobs

- Most students work over 20 hours per week

<https://go.wisc.edu/83932f>

Application Requirements



Admissions Deadlines:

Dec 15 – Priority deadline: Priority consideration for iSchool scholarships and decision letters by Feb 1

March 1 – Application deadline: To ensure full consideration, decision letters by Mid-late March

Steps to Follow:

- Step 1: Review iSchool admissions page
<https://go.wisc.edu/rw53q6>
- Step 2: Complete iSchool online application
<https://apply.grad.wisc.edu>



Application: What is needed?



Things to highlight in your essay:

- Multicultural competencies
- STEM background
- Language skills
- Community service
- Job experience, including teaching
- Time spent abroad
- Technology skills

1) Essay – Reasons for Graduate Study :

- Career goals, reasons for choosing UW-Madison, leadership experience, aspirations, what's unique about you

2) Resume or CV

3) Three references:

- Academic references required for at least 1
- Additional 2 references can be academic or professional (paid, volunteer or intern work)

4) Transcripts:

- Upload unofficial copies to application system

No GRE required!

Questions?



Information School
UNIVERSITY OF WISCONSIN-MADISON